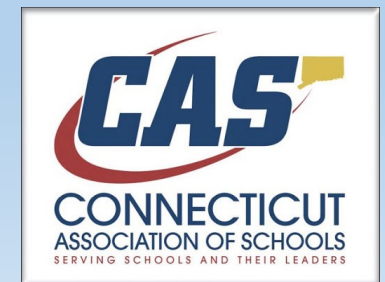


Round Table Conversation for Early Childhood Administrators

Increasing Family Engagement and Children's Learning Through Coaching

December 3, 2020



The Power of Coaching in

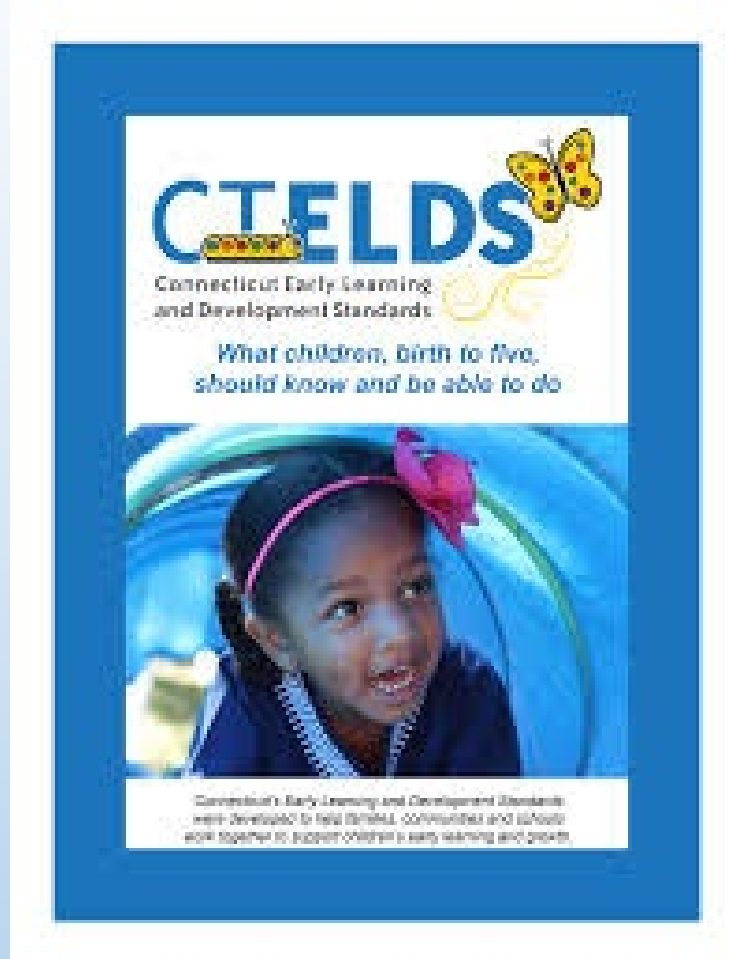


· **Supporting all children's learning**

· **Supporting IEP Goals**

· **Engaging Families/Child Care Providers**

· **Supporting Professional Development**

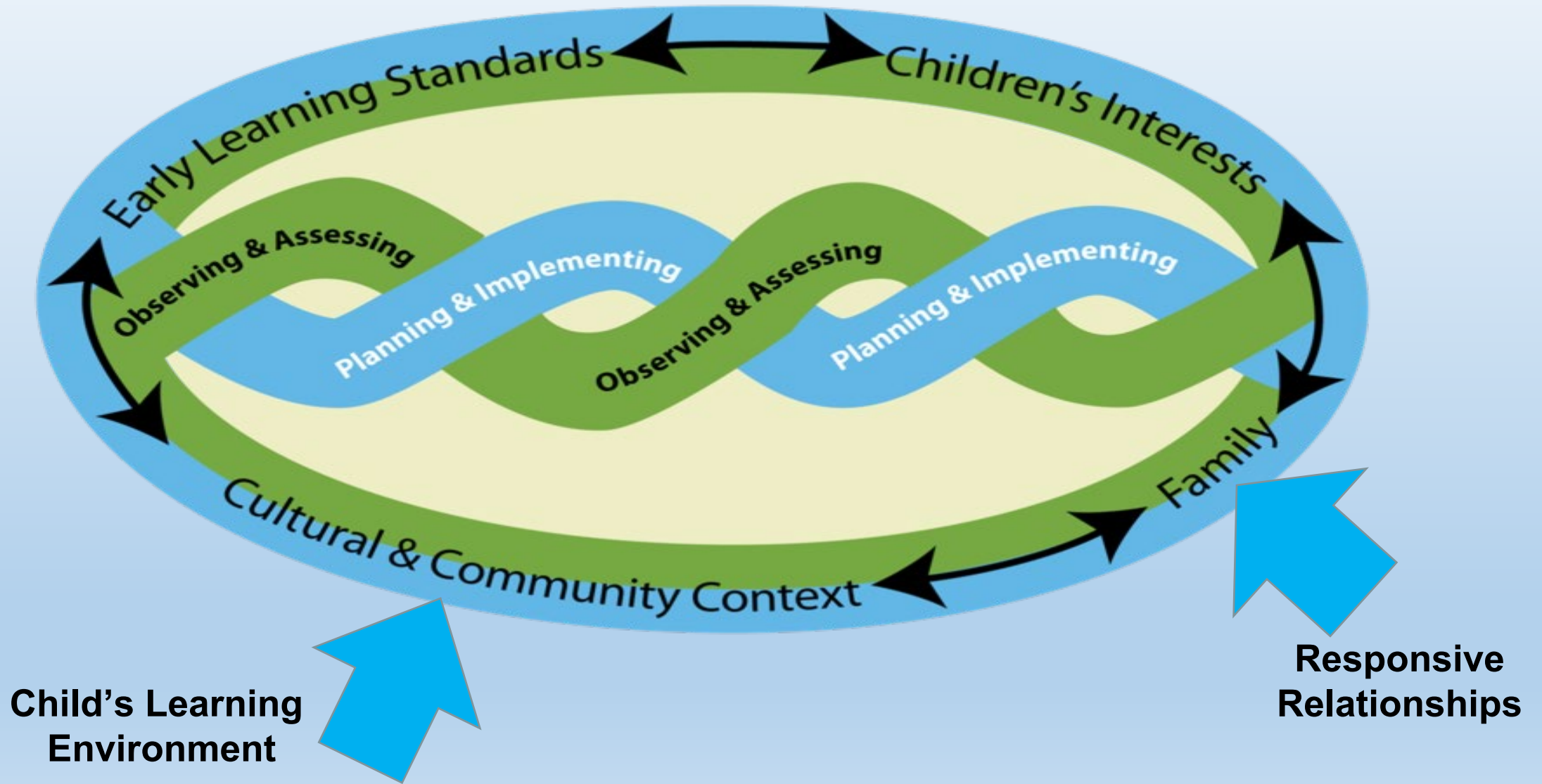


Young children learn in the context of relationships; through active exploration in relevant and culturally appropriate experiences, that are intentionally planned, and are integrated across developmental domains.

Our responsibility is to ensure positive learning outcomes for our students where ever they are!



Families/Caregivers are part of the cycle of intentional teaching pre-pandemic and even more so during the pandemic





So what is coaching?

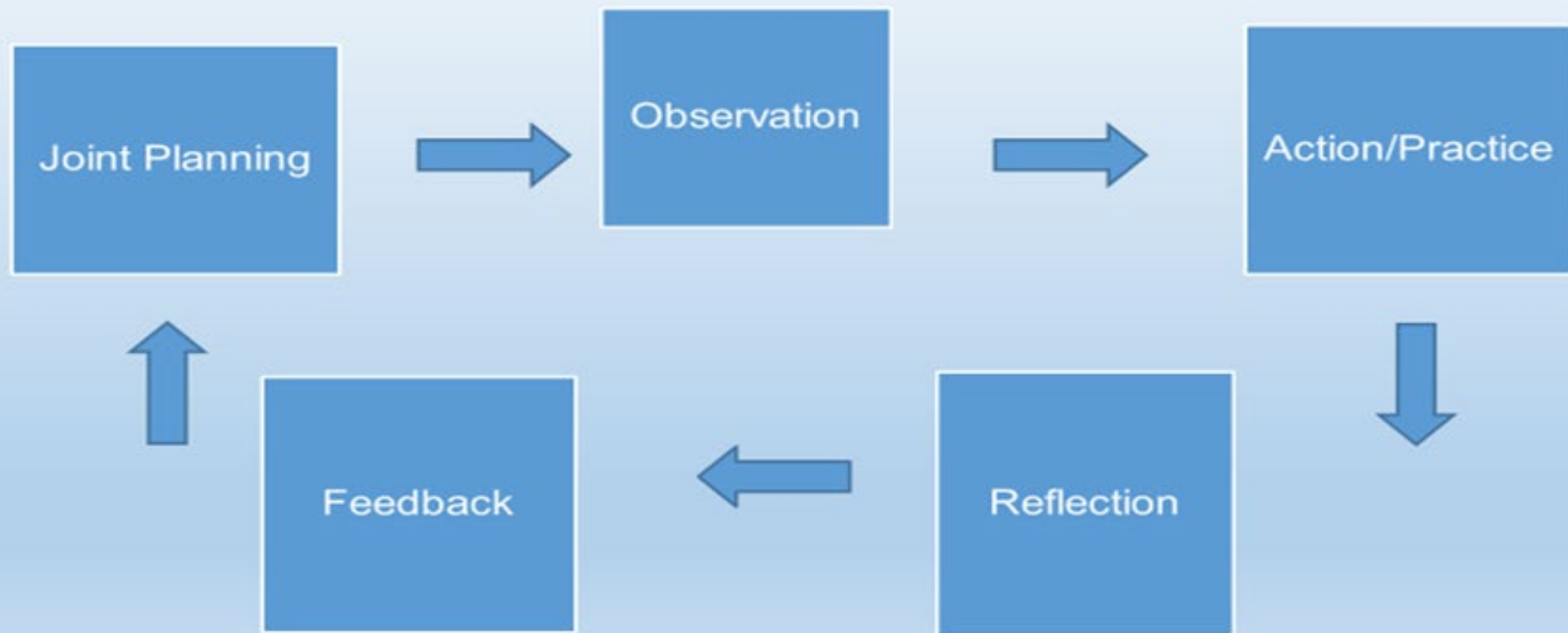
[Jamboard](#)



Coaching is a set of Evidenced Based Practices that

- **results in improved early childhood outcomes (ECO)**
- **is based on adult learning principles.**
- **is a way to interact with families, teachers, caregivers and other team members.**
- **builds confidence and competence.**
- **enhances the child's learning and development within the typical activities of the family/child care setting.**

Coaching Cycle



Early Intervention

PART 2: What Early Intervention Can
(and Should) Look Like

Small Group Discussion~



As a result of COVID-19, how does coaching look different from direct instruction?

Coaching as a Path



**Leads to
increase in family engagement,
increase in child's opportunities to learn and practice IEP goals,
increase in community relationships, &
decrease in need for compensatory services**

Small Group Discussion~

How do we build a culture that includes the family and the child care provider as part of the team?



Group Discussion~

As administrators and leaders, how do you support your teachers to implement this approach?

*How you are is as
important as what
you do*

- Jeree Pawl

Resources

- The Early Childhood Coaching Handbook, Dathan D. Rush, M'Lisa L Sheldon
- Coaching with Powerful Interactions – A Guide for Partnering with Early Childhood Teachers, Judy Jablon, Amy Laura Dombro, and Shaun Johnson
- Rush and Sheldon, Coaching <https://www.hfpg.org/foundations-of-coaching-in-early-childhood>
- Practice Based Coaching <https://youtu.be/xx2fDuyjbMw>
- Coaching; Embedding instruction into Daily Routines https://youtu.be/sL_WOCu3Ptg
- Remote home visit with coaching, family reflection on coaching: https://youtu.be/Oog-0_BclWw
- Remote visit with coaching: https://youtu.be/s1SUgb3q8_I
- Supporting families in distance learning: <https://youtu.be/hZUCd7qlyrg>

THANK YOU!

Wrap Up
Next Steps
Survey of Needs

