

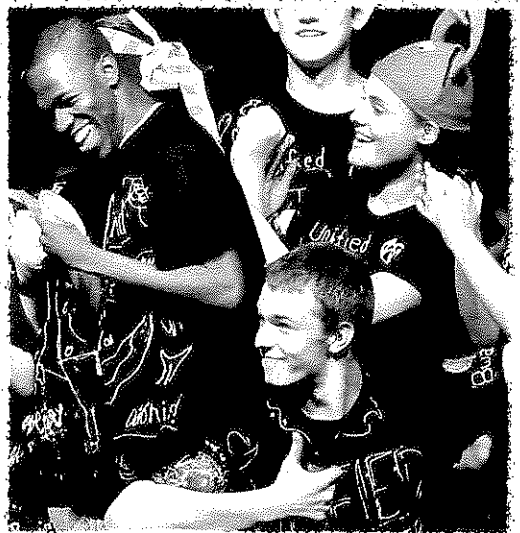
Unified Theater™

discovering theatrical abilities

Bringing students with & without special needs together as equals in inclusive, student-led, theatrical productions.

www.unifiedtheater.org

Ability *over* Disability



"In my experience, no program or activity reaches the elusive goal of inclusion as completely - or as joyously - as Unified Theater™."

Tom Fiorentino - Unified Theater™ Parent

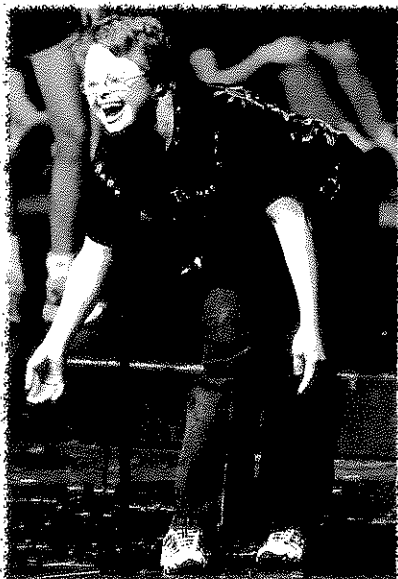
Collaboration *over* Competition

"One of my favorite parts is watching the audience after our shows. People emerge from the auditorium either unable to wipe the smile off of their face or crying tears of joy. Unified Theater™ has a unique ability to touch an entire community, not just the participants lucky enough to get on stage."

Bridget Hickey - Unified Theater™ Alumni



Creativity *over* Conformity



"Your production reflects a belief in the spirit of diversity and in each individual's capacity to contribute toward a common goal"

Glenn McGrath - Director of Pupil Services, West Hartford Public Schools

"I am never more proud of our students, nor our whole community, than when I watch students from all different backgrounds, and abilities, come together in a performance that lets everyone be a star. It really reminds me of the power education can have to lift up the spirits of children, and families"

Tom Moore - Principal, Conard High School



**We want to help you
develop a Unified
Theater™ group in your
school or community!**

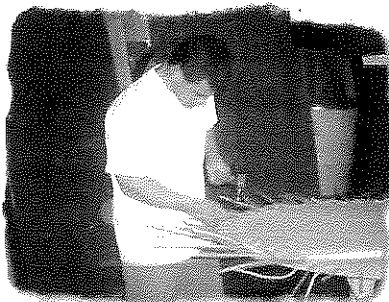
We can support you by:

- Helping find student leaders and faculty advisors.
- Working with you to fund the program costs.
- Training Student Leaders and supporting them throughout their production.
- Helping recruit participants, plan rehearsals, and develop productions.
- Working with you and your student leaders to troubleshoot anything at anytime throughout your Unified Theater Process!

email us today :

contactus@unifiedtheater.org

Unified THEATER™ PROGRAMS WORK TO:



DISCOVER THEATRICAL ABILITIES

In Unified Theater™ groups, all students are empowered by their ability to contribute to the final production through music, dancing, set design, and creativity.



DEVELOP STUDENT LEADERS

In our student-led productions, students develop their ability to take ownership of a project, lead by example, and support their peers towards a successful final show.



ENRICH COMMUNITIES

Unified Theater™ productions help develop communities that emphasize ability over disability, creativity over conformity, and collaboration over competition.

The mission of Unified Theater™ is to create and support theatrical groups equally featuring the talents of individuals with and without special needs. Unified Theater™ productions are fully inclusive, where individuals work side-by-side as equally contributing members throughout a student-led theatrical process.

A Typical Unified Theater™ Production:

- ◆ Is student led
- ◆ Encourages participation of individuals with various developmental and physical abilities.
- ◆ Offers opportunities for members to express themselves in all aspects of theater (singing, dancing/movement, acting, stagecraft, directing, and producing).
- ◆ Provides a non-competitive, structured yet flexible setting where all members have a voice in the final production.
- ◆ Lasts approximately hour or less
- ◆ Ends each show with a slide show of the Unified Theater™ process
- ◆ Takes six to eight weeks to produce, meeting twice weekly

"I enjoy Unified Theater so much because, from all the troubles and stresses of the school day, you get two hours to have as much fun as you want while still being a great role model and friend to kids who don't have the abilities you have. You get to work with kids you might not have met otherwise, enjoy yourself, and be with your friends, while making many new friends everyday. Who wouldn't want that?"

Brady, Unified Theater™ Participant